

NetOpacs Patch Installation Guide

Version 6.0.1.1

Last Updated: 13 June 2014

Only for customers who have previously upgraded their *NetOpacs* to Version 6.0 or 6.0.1

NetOpacs Patch Installation Guide

© 2015 OCLC (UK) Ltd

ALL RIGHTS RESERVED. Permission is granted to electronically copy and to print in hard copy portions of this document for training purposes by licensed users of the Amlib Library Management System. Any other uses – including reproduction for purposes other than those noted above, modification, distribution, republication, transmission, re-transmission, modification, or public showing – without the prior written permission of *OCLC (UK) Ltd* – is strictly prohibited.

Support:

Australia: 1300 260 795 (Local call cost in Australia)

Email:

support-amlib@oclc.org

Amlib Help Desk (TOPDesk):

<https://servicedesk.oclc.org/tas/public/>

OCLC Amlib Support Documentation:

<https://www.oclc.org/support/services/amlib.en.html>

Sales:

Australia: 1300 260 795 (Local call cost in Australia)

Fax: +61 (0) 3 9929 0801

Email: sales-amlib@oclc.org

www.oclc.org/en-AU/

NetOpacs Patch Installation Guide

TABLE OF CONTENTS

WELCOME	5
OVERVIEW	5
BEFORE YOU BEGIN THE INSTALLATION.....	6
Read the Installation Notes First	6
Serial Numbers Required for Installation of Amlib Modules	6
Frequently Asked Questions	6
UPGRADE NETOPACS	7
Step 1: Shutdown the NetOpacs	7
Step 2: Install the NetOpacs 6.0.1.1 Client Patch.....	9

NetOpacs Patch Installation Guide

WELCOME

Welcome to the *NetOpacs 6.0.1.1 Patch* Installation Guide.

This is a patch release containing enhancements to the *NetOpacs* module. The complete installation time is estimated at less than one (1) hour to complete.

Please Note: This document has been prepared for all libraries that currently have the Amlib NetOpacs Module Version 6.0 installed.

OVERVIEW

The upgrade of the *NetOpacs* involves the following steps:

1. Shutdown the *NetOpacs*
2. Upgrade of the *NetOpacs* client application to *NetOpacs 6.0.1.1*
3. Restart computer

BEFORE YOU BEGIN THE INSTALLATION...

Read the Installation Notes First

Please carefully read the entire installation guide prior to commencing the actual *NetOpacs* release update.

If you have any questions please contact: support-amlib@oclc.org.

Serial Numbers Required for Installation of Amlib Modules

The *NetOpacs 6.0.1.1* patch **DOES NOT** require a serial number.

Frequently Asked Questions

Question: Do I need to have a completed backup of my system before proceeding?

- Yes. *OCLC (UK) Limited* recommends that the library verify that it has an up-to-date backup of its database (for example: from the previous night) before installing any updates. You should also make sure that your tape backup includes a backup of your *NetOpacs* folder (for example: **C:\NetOpacs**) and all *NetOpacs* templates.

Question: Does *NetOpacs* need to be shut down?

- Libraries using the *NetOpacs* module should ensure that this program is shutdown prior to upgrading

Question: Can OCLC (UK) Limited install the upgrade for me?

- Yes. *OCLC (UK) Limited* can arrange for the onsite installation of this upgrade for a fee

NetOpacs Patch Installation Guide

UPGRADE NETOPACS

Please Note: This process is only for libraries that have purchased this optional module.

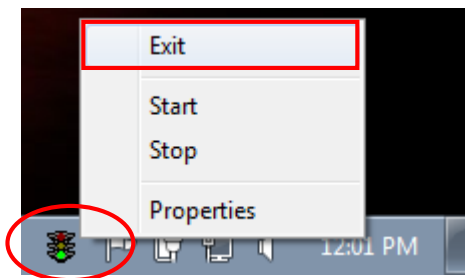
Depending on the library configuration the *Amlib NetOpacs* module will either be installed on the library database server (generally most school libraries) OR will be installed on a separate web server (generally public and all other libraries).

Step 1: Shutdown the NetOpacs - if using WebConsole

It is important that before installing the new *NetOpacs* release software that the *NetOpacs* WebConsole is shutdown (including all *NetOpacs* processes). Alternatively, if you may be running your *NetOpacs* as a Service or using a Service Manager to run your *NetOpacs* (for example: *FireDaemon*) then you should stop your *NetOpac* processes in the Manager.

To shut down your *NetOpacs* (via the WebConsole):

1. On your *NetOpacs* server, right-click on the *NetOpacs* WebConsole “traffic lights” in your Windows system tray at the bottom-right of the screen and select **Exit**:

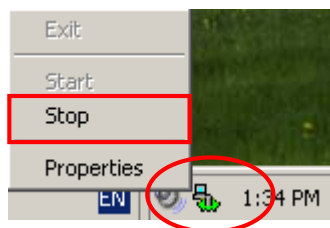


2. The “traffic lights” and all *NetOpacs* icons on the Windows taskbar will disappear once *NetOpacs* has successfully shutdown

To shut down your *NetOpacs* (when running as a service):

If your server has the *Amlib* Web Monitor icon (icon is a PC with “cog”) in your Windows “tray it means that *NetOpacs* has been installed as a service.

1. On your *NetOpacs* server, stop the *NetOpacs* service either by a right-clicking on the *Amlib* Web Monitor and choosing **Stop**, or via the Windows Services screen:



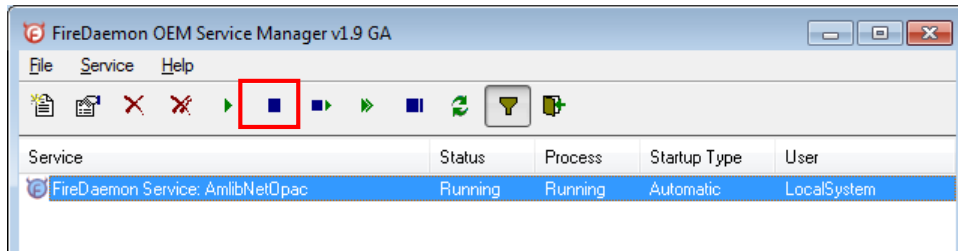
NetOpacs Patch Installation Guide

Step 1: Shutdown the NetOpacs

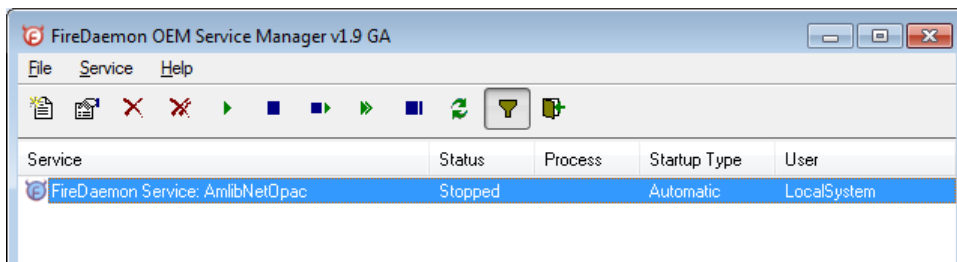
- if using a service manager like FireDaemon)

If your web server has neither the “traffic light” nor “cog icon” in the system tray, the *NetOpacs* may be running as a *FireDaemon* service.

1. On your *NetOpacs* server, go to **Start > All Programs > FireDaemon OEM > FireDaemon Service Manager** – the FireDaemon OEM Service Manager screen will display:



2. Highlight the Amlib NetOpacs service and click the **Stop** button



Please Note: The Webserver (*Windows 2003/2008 Server* running *NetOpacs*) should be restarted **WITHOUT** loading *NetOpacs* - you will need to check whether *NetOpacs* WebConsole is in the *Windows NT* “Startup” group (if it is you may need to temporarily remove it from the Startup group, or temporarily disable automatic startup if running as a service).

NetOpacs Patch Installation Guide

Step 2: Install the NetOpacs 6.0.1.1 Client Patch

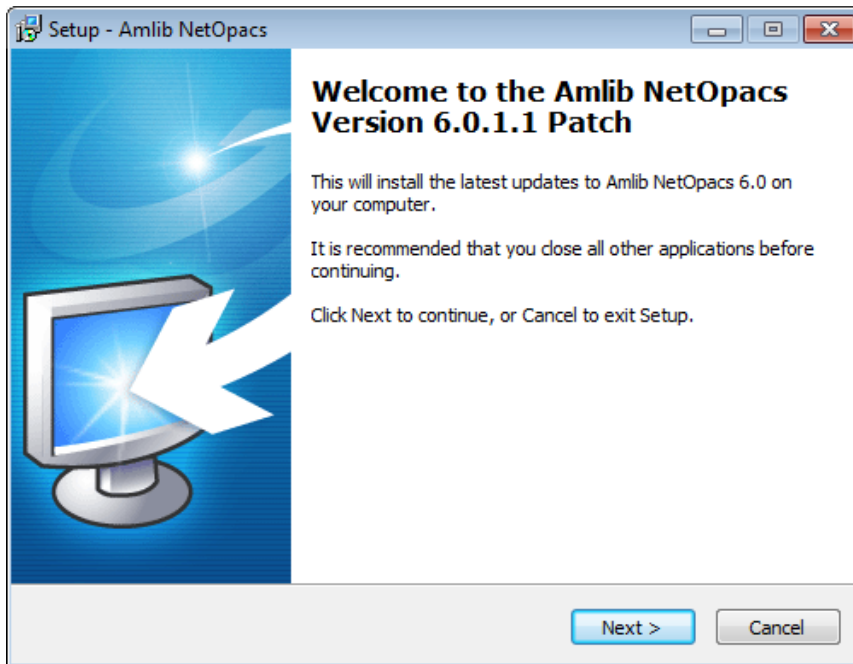
IMPORTANT: Please ensure that you have **full read/write** access to the **\NetOpacs** folder on your server (for example: **C:\NetOpacs**) and that you are logged in with Administrative Privileges.

1. The *NetOpacs 6.0.1.1 Patch* installer is available on the OCLC Website here , under *Updates and Patches > NetOpacs*

<https://www.oclc.org/support/services/amlib/downloads-software-updates/version6-0/updates-and-patches.en.html>

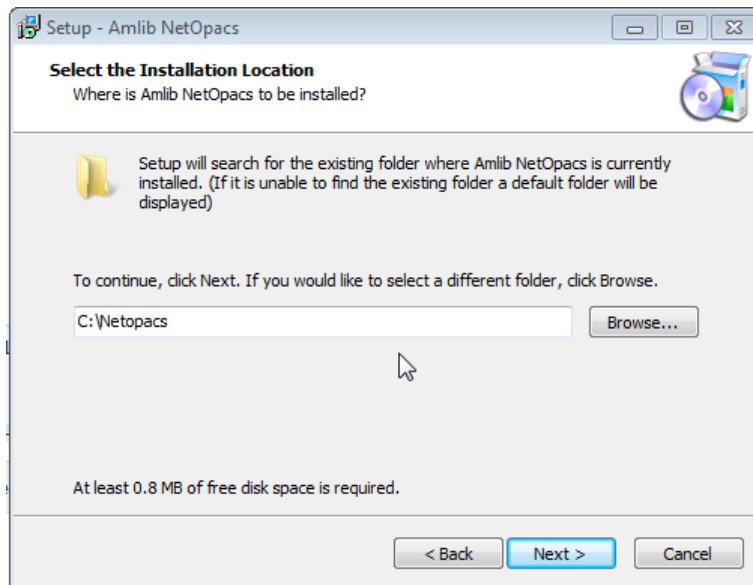
(Contact *Amlib* support if you require a login to this website)

2. Download the **NetOpacs6011Patch.exe** and save it on your *Amlib* server
3. Double-click the **NetOpacs6011Patch.exe** to launch the installation Wizard – the Setup – Amlib NetOpacs screen will open displaying the **Welcome** message:

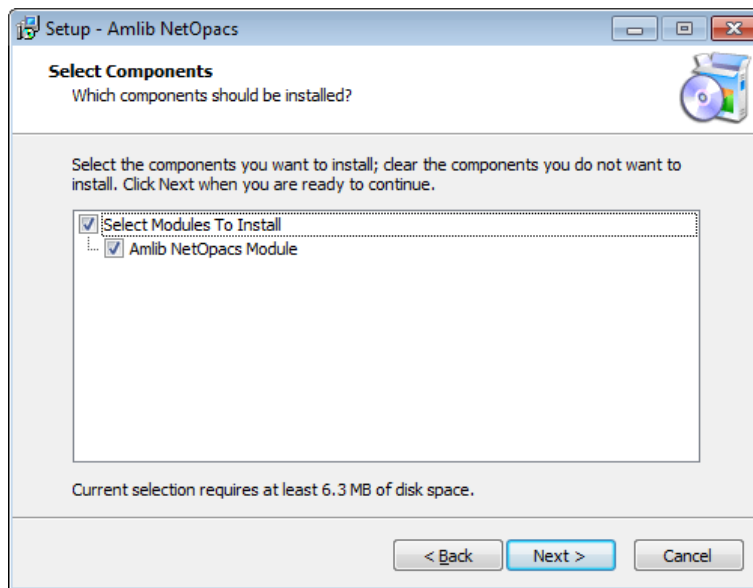


3. Click the **Next** button – the Installation Location window will be displayed
4. Setup will search for the existing folder where the *Amlib NetOpacs* are currently installed (if it is unable to find the existing folder a default folder will display)

NetOpacs Patch Installation Guide

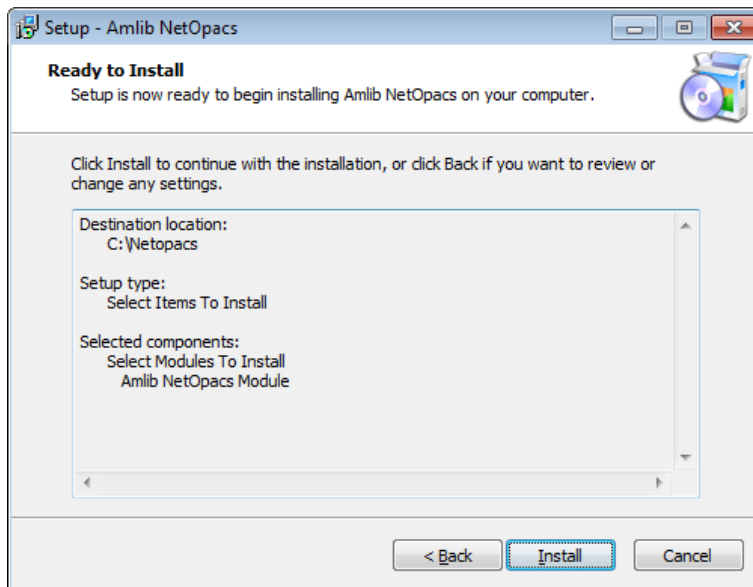


5. If the folder displayed IS NOT correct then click the **Browse** button to manually locate the location of the existing \NetOpacs folder
6. Click the **Next** button – the Select Components window will display:

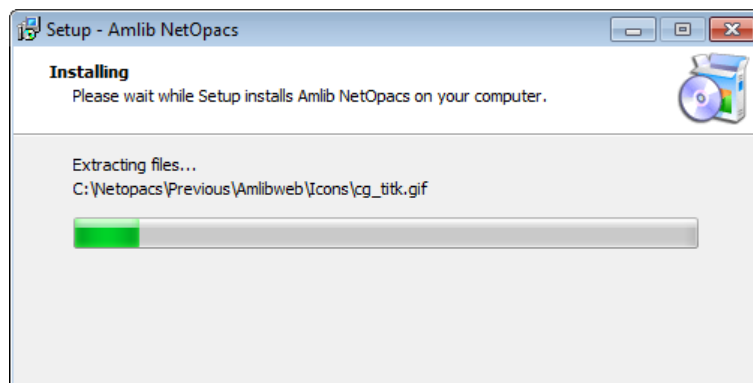


7. Choose which components should be installed:
 - a. Select Modules To Install:
 - **Amlib NetOpacs Module**
8. Click the **Next** button – the Ready to Install window will display with a summary of the installation tasks to be performed:

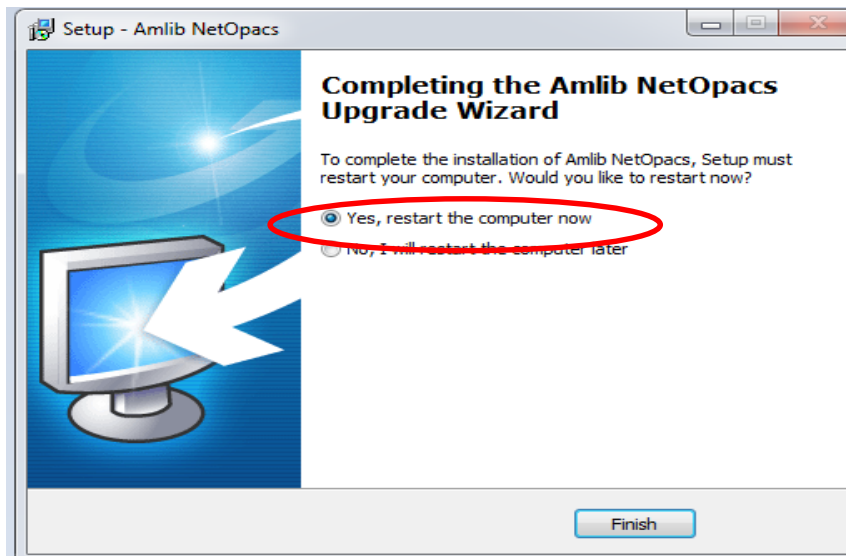
NetOpacs Patch Installation Guide



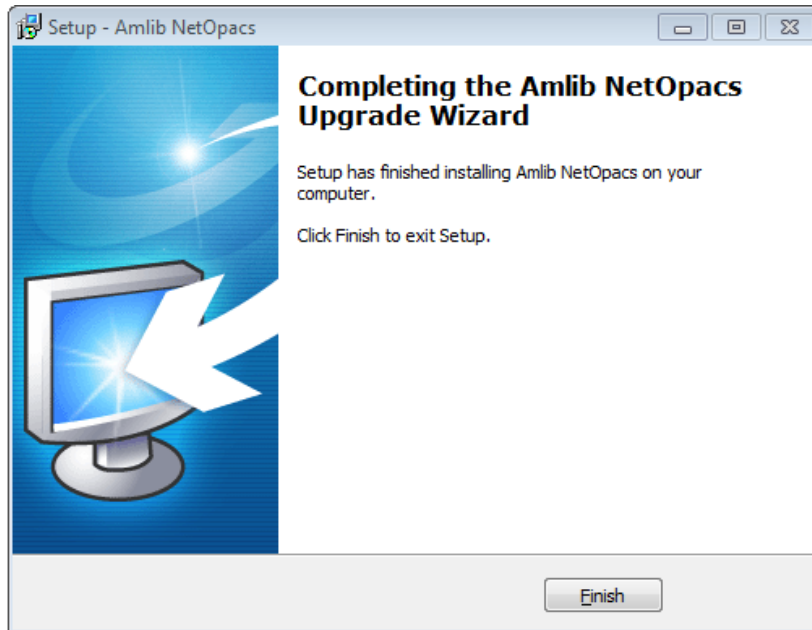
9. Click the **Install** button – the Installing window will display:



10. Select the **Yes** option



11. Click the **Finish** button



12. The setup Wizard will close

13. Once the upgrade is complete, you will need to restart your computer/server –

Installation of the **Amlib 6.0.1.1 NetOpacs Patch** is now complete.

Notes

For libraries who have configured their web server with multiple *NetOpacs* installation folders on the one server (for example: have *NetOpacs* installed in **c:\Netopacs** and **c:\Netopacs2**) will need to repeat the upgrade steps 3 – 13 for each additional *NetOpacs* folder, remembering to change the name of the Installation Location at step 4.